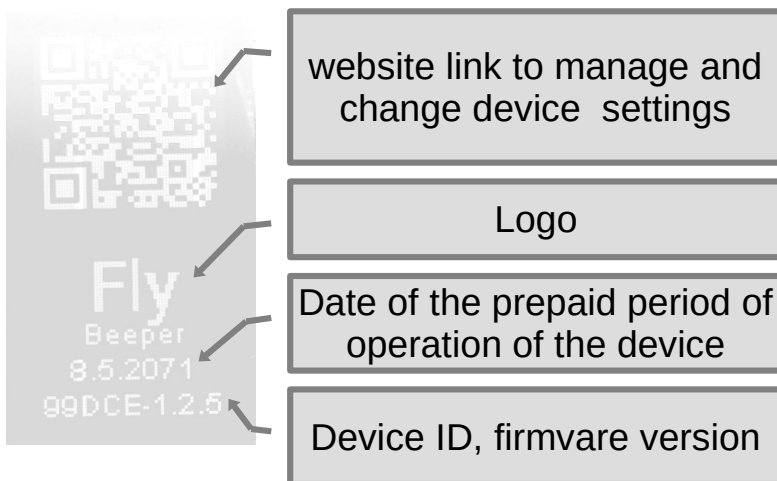
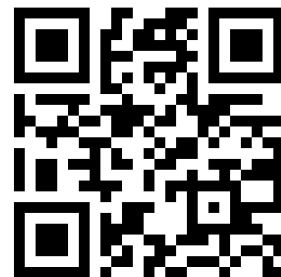




Power on/off — press and hold until the screen turns on/off. Double click activates flashlight. On OSD menu activates/changes properties.

### Startup screen



<https://flybeeper.com/device>



Website to connect to device and change the broadcast name of the pilot, set the QNH, configure the output of NMEA messages, download the IGC track, etc.  

<https://flybeeper.com/map>



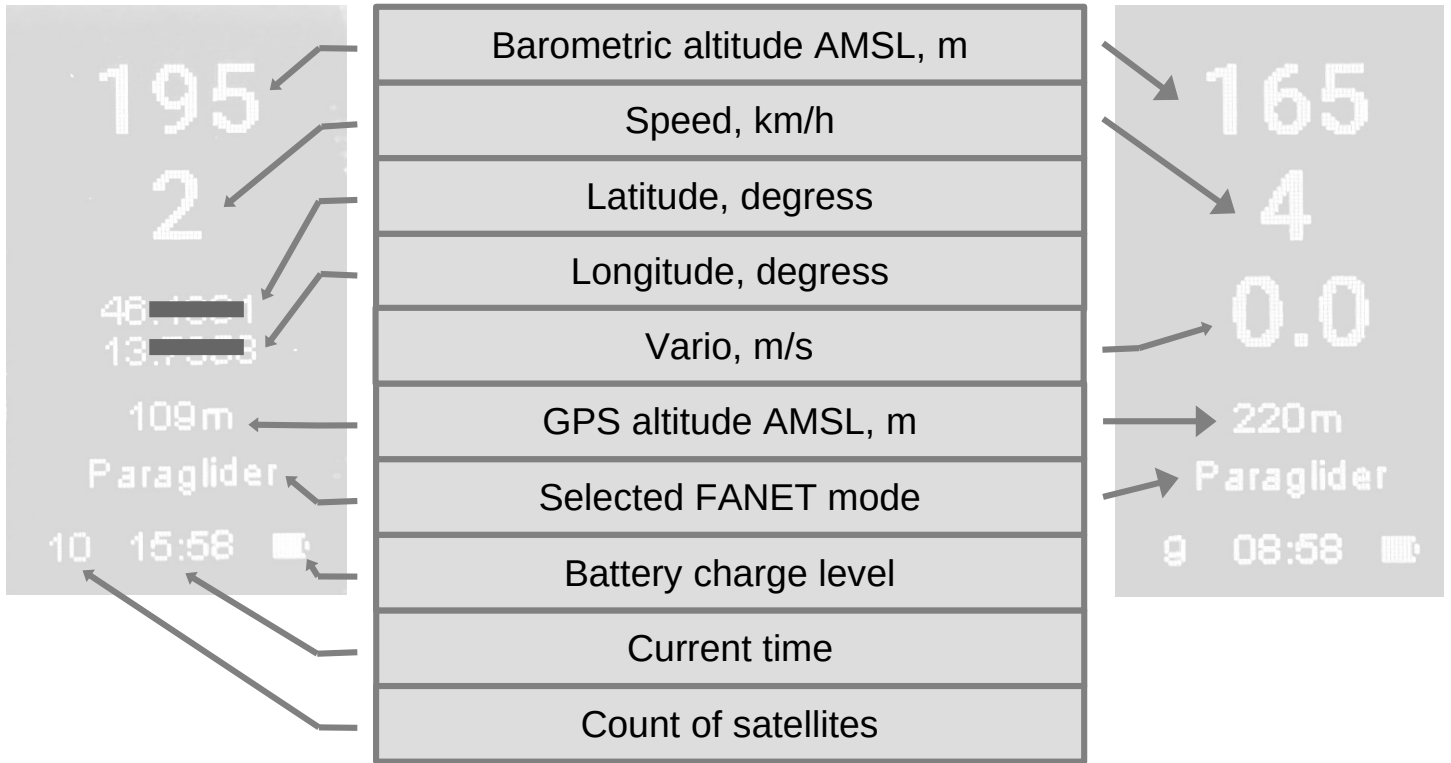
3D maps. Displays FANET traffic received by base stations. Connect the device via BLE or USB and turns it into a base station and displays the packets received by FANET on the map.



«on the ground»

Screen

«in the air»



### OSD menu

MENU:	Air Activity	groundActivity
>EXIT	EXIT	>BACK
ACTIVITY	Paraglider 1	Waking 0
SOUND	Hangglider 0	Vehicle 0
NMEA	Balloon 0	Bike 0
INFO	Glider 0	Boat 0
	Aircraft 0	NeedRide 0
	Helicopter 0	Landed 0
	UAV 0	Medical 0
	>NEXT	

Switch between menu items by the Menu button. Activate the menu item by the OK button.

ACTIVITY - selection of one of the FANET ground or air activities

SOUND - set the volume of the vario

NMEA - select messages broadcast via bluetooth

- \*FBFAN - FANET traffic
- \*GPS - own coordinates
- \*PRS - pressure (xcSoar)
- \*POV - pressure (xcTrack)
- \*PFLAA - FLARM traffic

INFO - device information

SOUND	NMEA	INFO
>BACK	>BACK	>BACK
Volume: 0	FBFAN 1	FlyBeeperF1
	GPS 1	v1.2.5
	PRS 0	id: 099DCE
	POV 1	
	PFLAA 0	Copr.2022
		Alpisto d.o.o